

Welcome!

Welcome to the GMATPrep™ application. The GMATPrep™ test-preparation software was designed by the people who created the GMAT™ exam, to help you get ready to take the test. It includes practice questions for each type of question asked on the exam and two full-length, computer-adaptive GMAT™ tests.

This document provides information about installing and running the GMATPrep™ software. If you have problems installing or using the application, refer to the “Need Help?” section at the end of this document.

Minimum System Requirements

Before installing the GMATPrep™ software, be sure your computer meets the requirements listed below. The software is not designed to install and run properly on systems that do not meet these requirements.

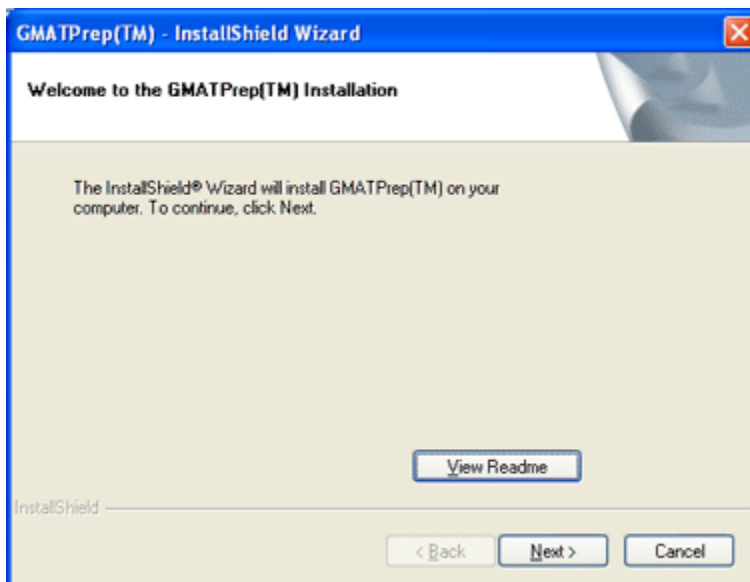
- Pentium III PC or compatible, 1 GHz (Pentium 4, 2 GHz recommended). Macintosh computers are not currently supported.
- 512 MB of RAM
- 60 MB of empty hard disk space
- CD-ROM drive (required for installation)
- Microsoft Windows XP or 2000 (home or professional version) in English. The GMATPrep™ content displays in English only.
- Microsoft Internet Explorer 5 or higher
- Super VGA (800 x 600) or higher resolution monitor (1024 x 768 recommended), with high color (16 bit)
- Microsoft compatible mouse or pointing device
- Internet access is not required.

Installing the GMATPrep™ Software

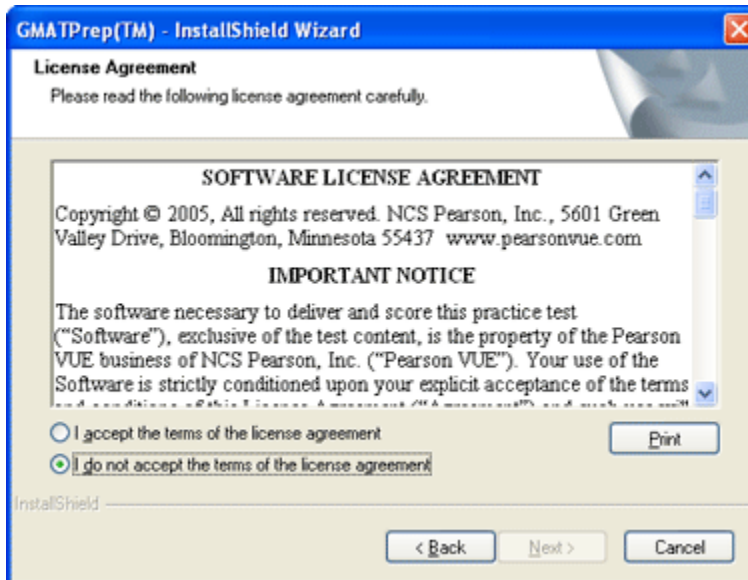
The installation process is quick and easy—just follow the instructions on the computer screen. We've also outlined the process for you below.

1. **If you are installing from the CD**, insert the GMATPrep™ CD in your computer's CD drive. The installation program launches automatically. (If it does not, double-click the CD drive's icon and then double-click GMATPrepSetup.exe.) **If you are installing from a file you downloaded from mba.com**, double-click GMATPrepSetup.exe.

The Welcome screen is displayed.

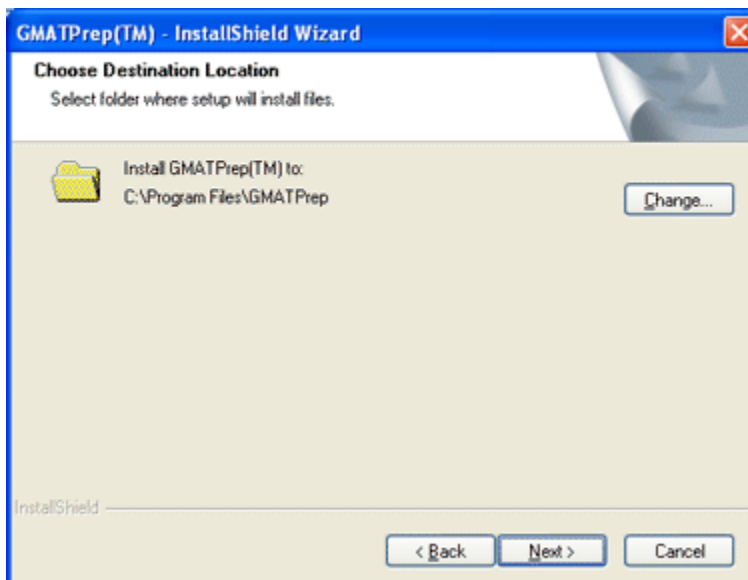


2. Click the **Next** button to continue. The License Agreement is displayed. Please read the Agreement on your screen or click the **Print** button to print a copy. If you agree to the terms, click the "I accept..." button. (If you do not agree to the terms, you must follow the instructions provided in the Agreement.)



3. Click the **Next** button. A message asks you to confirm that you accept the terms of the License Agreement. If you are certain that you agree, click the **Yes** button.

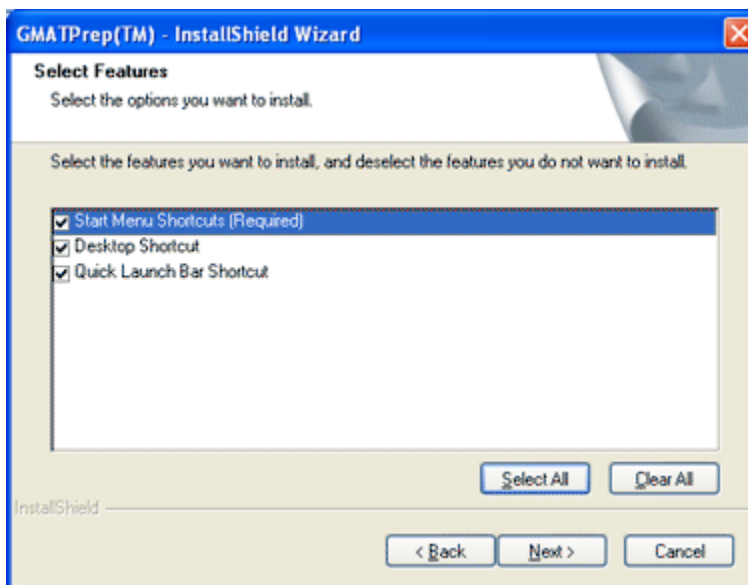
The Choose Destination Location screen then displays the name of the folder in which the software will be installed. We recommend that you do not change this location.



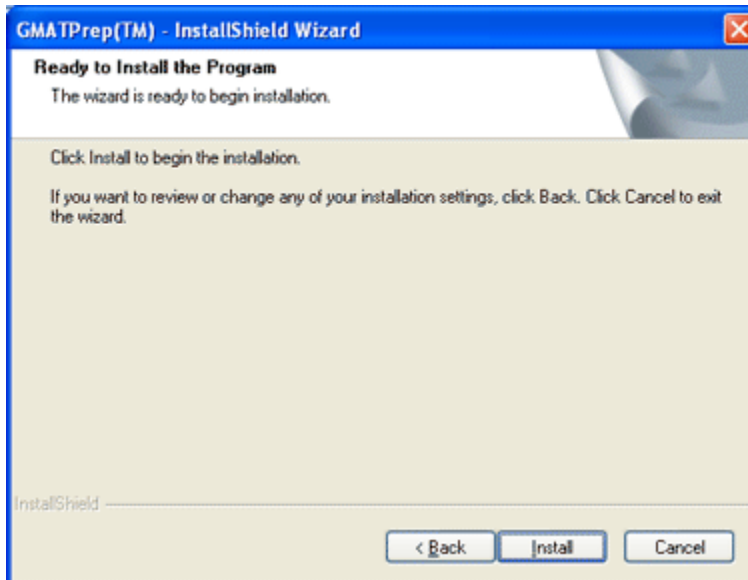
4. Click the **Next** button. The Select Features screen allows you to choose the shortcut methods of launching the GMATPrep™ software that you want to install. Click the

options to deselect or select them.

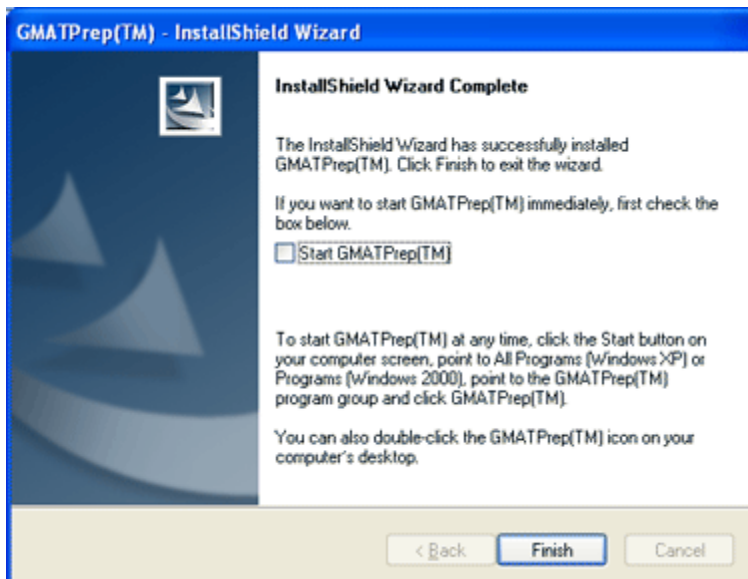
- The Start Menu Shortcuts option is always installed and cannot be deselected. These shortcuts allow you to run or uninstall the GMATPrep™ software by selecting an item from the GMATPrep(TM) program group on the Windows Start menu. A shortcut to mba.com is also provided.
- The Desktop Shortcut option installs a GMATPrep(TM) icon on your computer's desktop that you simply double-click when you want to run the application.
- The Quick Launch Bar Shortcut option places a GMATPrep(TM) icon in the Windows Quick Launch bar that normally appears at the bottom of your computer screen; clicking the icon on the bar launches the GMATPrep™ software.



5. Click the **Next** button. The Ready to Install screen is displayed.



6. Click the **Install** button to begin the installation process. During this process, a Setup Status screen displays progress information. After the files are installed, the following screen appears. If you want to launch the GMATPrep™ application immediately after exiting the installation program, click the Start GMATPrep(TM) option so that a checkmark appears in the box.



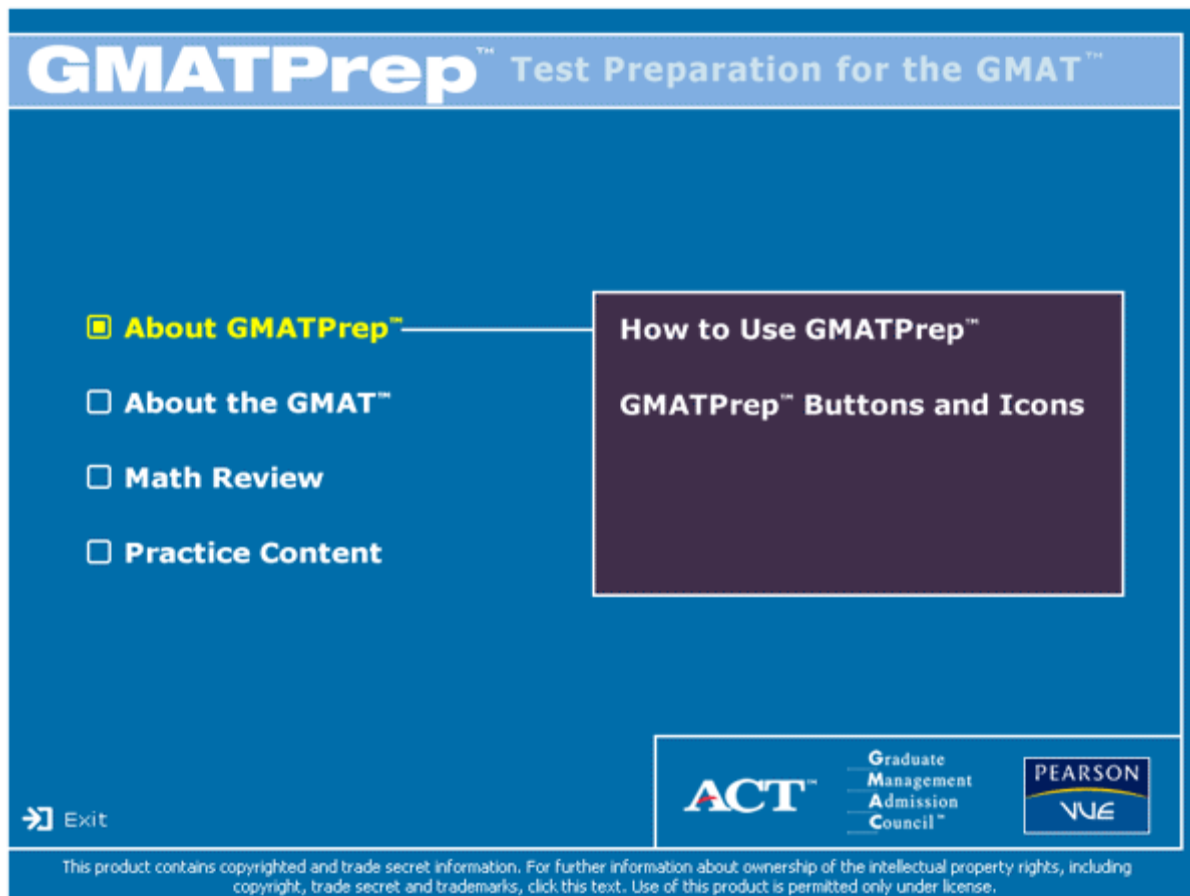
7. Click the **Finish** button to exit the installation program. If you checked the Start GMATPrep(TM) box in step 6, the GMATPrep™ application will automatically open.

Running the GMATPrep™ Software

To run the GMATPrep™ software, do one of the following:

- Click the **Start** button on your computer screen. Point to **All Programs** (Windows XP) or **Programs** (Windows 2000). Point to the GMATPrep(TM) program group and click GMATPrep(TM).
- If you chose to install a GMATPrep™ shortcut icon during installation, double-click the icon on your computer's desktop.
- If you chose to install a GMATPrep™ shortcut icon on the Windows Quick Launch bar during installation, click the icon on the bar.

The GMATPrep™ main menu appears as shown below. Click one of the four section names on the left to display a list of the subsections within each section. Then click the name of the subsection you want to run. To get the most out of the software, we recommend going through the About GMATPrep™ section first. That section helps you get started and provides an overview of the content available within the GMATPrep™ software.



Exiting the GMATPrep™ Software

- When you run any of the subsections within the About GMATPrep™, About the GMAT™ or Math Review sections, the content is displayed in an Internet Explorer window. Click the **Close** button in the upper right corner of the window to return to the GMATPrep™ main menu.
- When you are working in the Practice Content section, you can click the **End Exam** button at any time to end the activity. You are given options to save your work, and you then return to the main menu.
- To close the entire GMATPrep™ application, click the **Exit** button in the lower left corner of the main menu.

Uninstalling the GMATPrep™ Software

To uninstall, click the **Start** button on your computer screen. Point to **All Programs** (Windows XP) or **Programs** (Windows 2000). Point to the GMATPrep(TM) program group and click Uninstall. You'll be asked to confirm that you want to uninstall the application. If you click **Yes**, the GMATPrep™ application files are removed and an Uninstall Complete screen is displayed. Click **Finish** to exit the uninstall application. You may reinstall the GMATPrep™ software at any time.

Need Help?

You can contact the GMATPrep™ support staff using the information below. To help us respond quickly and accurately to your questions, please provide the following information when you email or call us:

- details about the problem you are having and about any messages that appear on your computer screen
- computer type and speed (such as Pentium 4, 2 GHz)
- amount of memory (RAM)
- Microsoft Internet Explorer and Windows operating system versions
- monitor resolution and color setting

Email: GMATTechSupport@pearson.com

Phone (Available Monday through Friday. English language support only):

- Americas: +1 952 681 3943 (7 AM to 7 PM CST)
- Europe/Middle East/Africa: +44 (0) 161 855 7218 (8 AM to 6 PM GMT)
- Asia Pacific: + 61 2 9478 5435 (9 AM to 6 PM AEST)